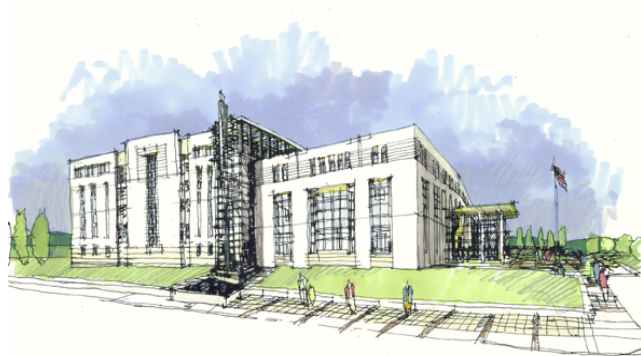


JUVENILE JUSTICE FACILITY AND EAST COUNTY HALL OF JUSTICE EIR/EIS

Alameda County

THE PROJECT:

The County of Alameda needed to replace, relocate and/or upgrade its 50-year old juvenile detention facility located in the hills of San Leandro. The County received a substantial federal grant to build a new state-of-the-art facility, but needed to decide where to locate it. The initial plan was to incorporate it within a new civic center being planned for the City of Dublin in the eastern part of the County. East County residents grew opposed to a juvenile justice facility in their area, and juvenile justice advocates strongly opposed the concept as being too large and too far removed from the population it would serve. The controversy over where to place it led to consideration of several alternatives, each with differing sets of environmental and socio-economic implications.



LAMPHIER-GREGORY'S ROLE:

Lamphier-Gregory led a team of technical consultants to study the environmental challenges that could be expected at each of six potential sites. Our report needed to satisfy the requirements of CEQA for the County, as well as federal environmental review under NEPA for the Department of Justice. Lamphier-Gregory's analysis included a full range of environmental and socio-economic issues.

THE OUTCOME:

Lamphier-Gregory's conclusions coincided with the opinions of many community and advocacy groups, and helped lead the County to a decision on a preferred location for the facility. The County's decision was to construct a new, smaller Juvenile Justice Facility than what was originally planned, and to locate it within the County's urban center so as to be closer to the majority of the youths and their families it would serve. Lamphier-Gregory helped to achieve a satisfactory resolution of many passionate issues without follow-up litigation.

